

mme

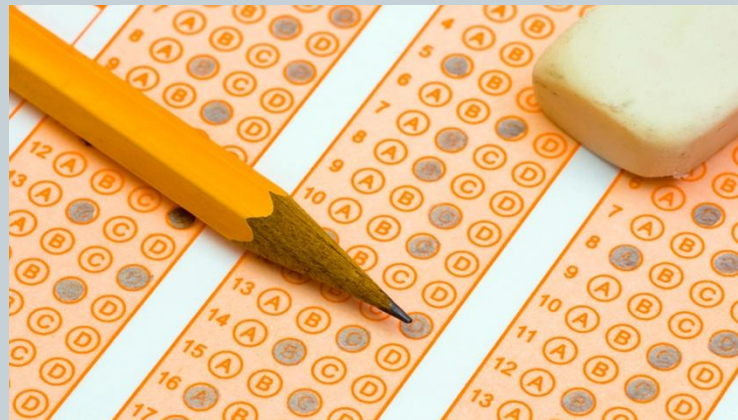
Michigan Merit Examination

GAYLORD COMMUNITY SCHOOLS
AUGUST 8, 2011

What is the MME ?



- Annual test given to all State of Michigan 11th grade students.
- Three day test.
- Combination of ACT, WorkKeys, and Michigan Assessment.



ACT (American College Test)



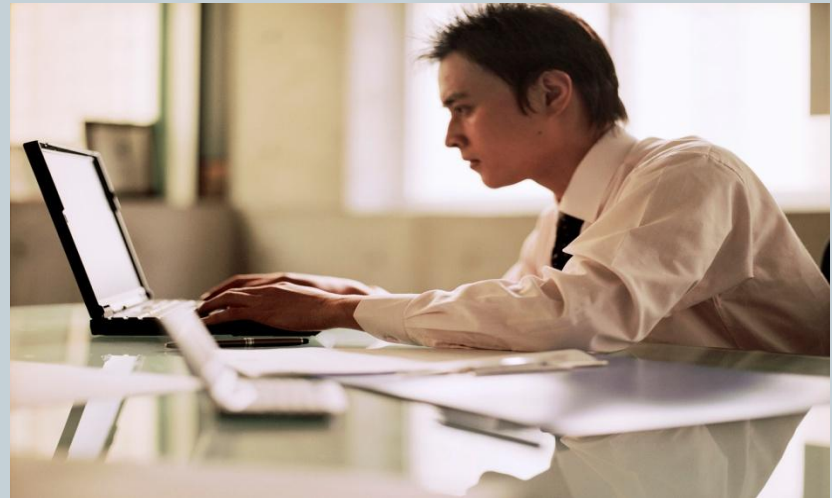
- The **ACT** is a standardized test for high school achievement and college admissions in the United States produced by ACT, Inc.
- ACT + Writing
- Scores:
 - English
 - Mathematics
 - Science
 - Reading
 - Writing



WorkKeys



- WorkKeys assessment measures cognitive abilities in areas of:
 - Applied Mathematics
 - Reading for Information
 - Locating Information
- It is designed to predict job behavior and measure the full potential of individuals.



Michigan Assessment



- “MEAP-like” assessment specifically matched to the Michigan HSCE’s.
- Scores:
 - Mathematics
 - Science
 - Social Studies



Gaylord vs. State of Michigan

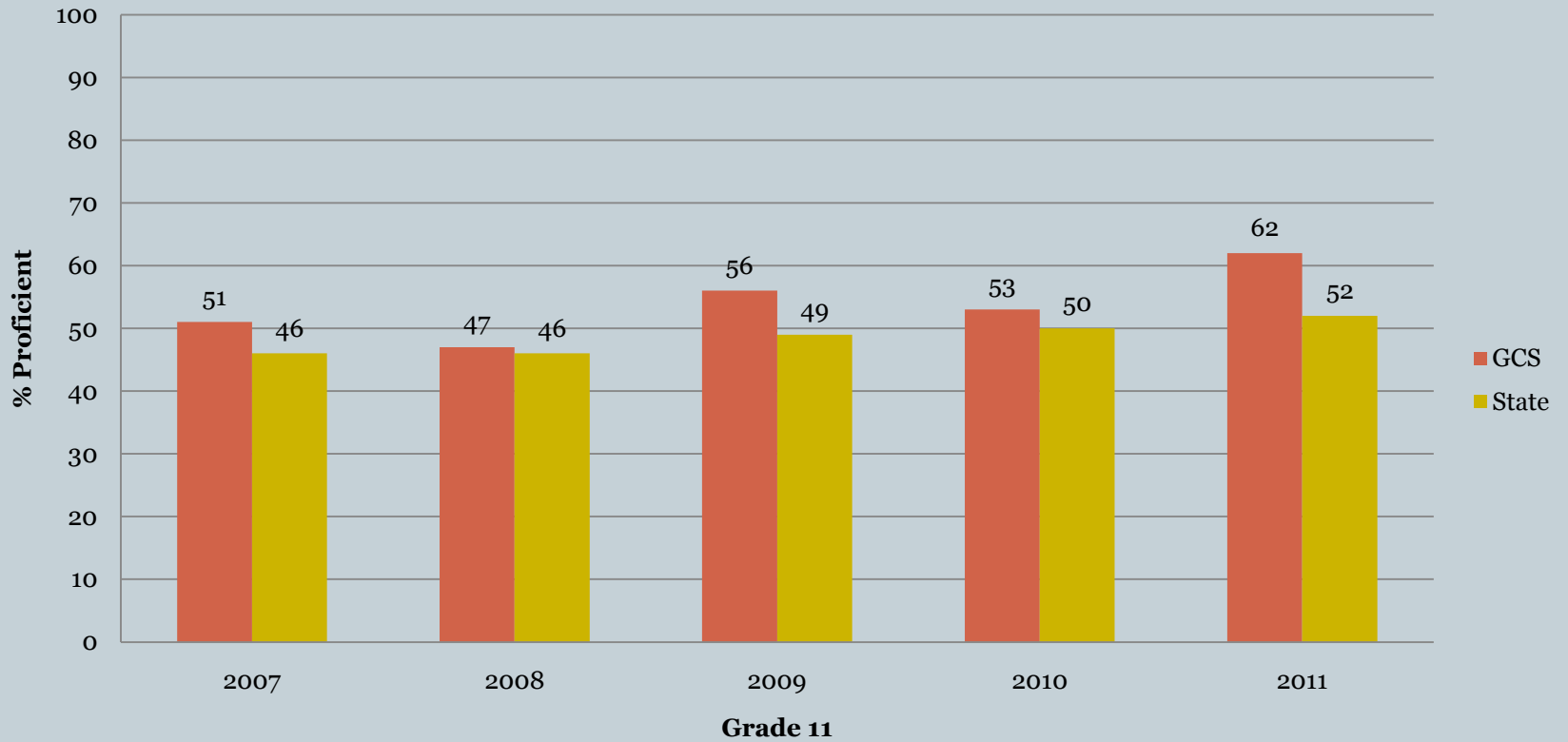


GAYLORD COMMUNITY SCHOOLS



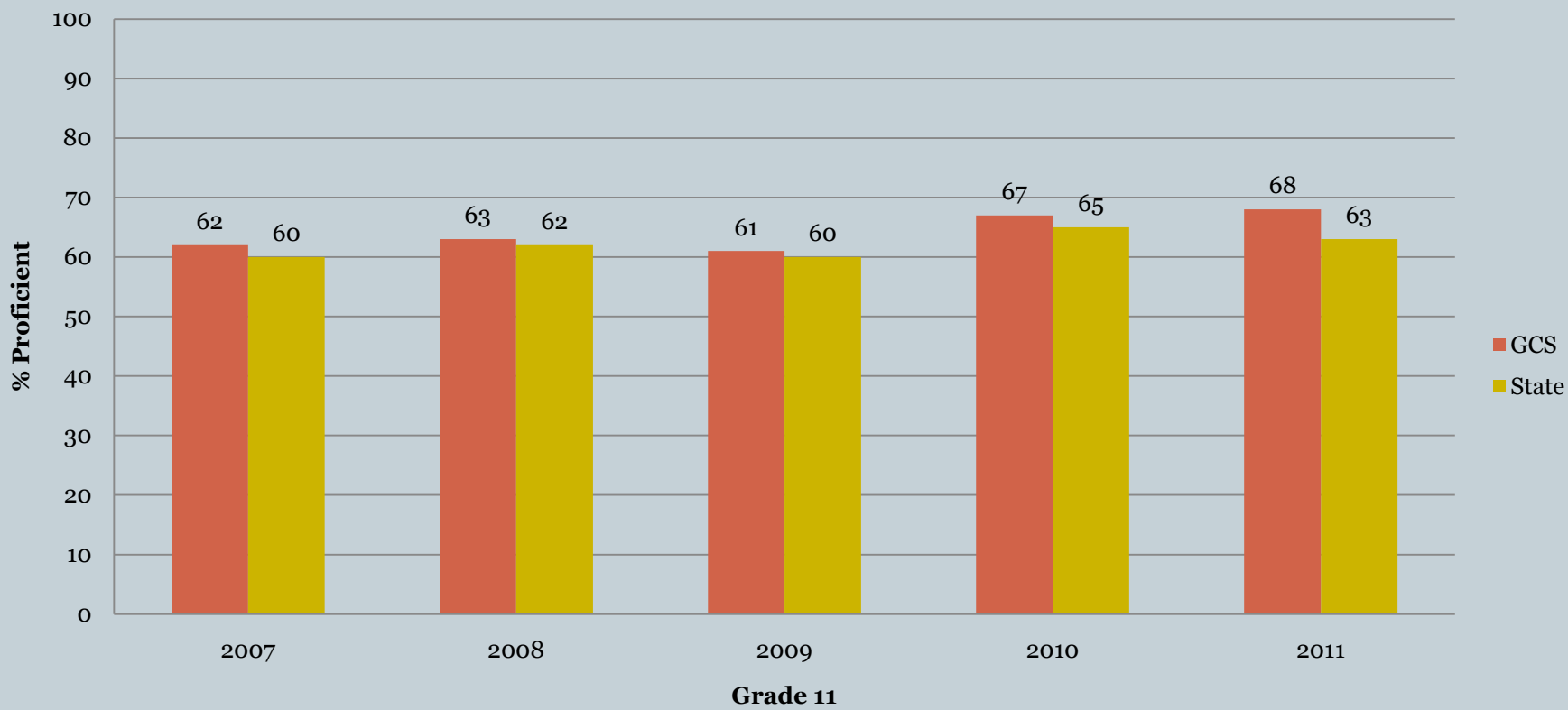


2007-11 MME Math GCS vs. State



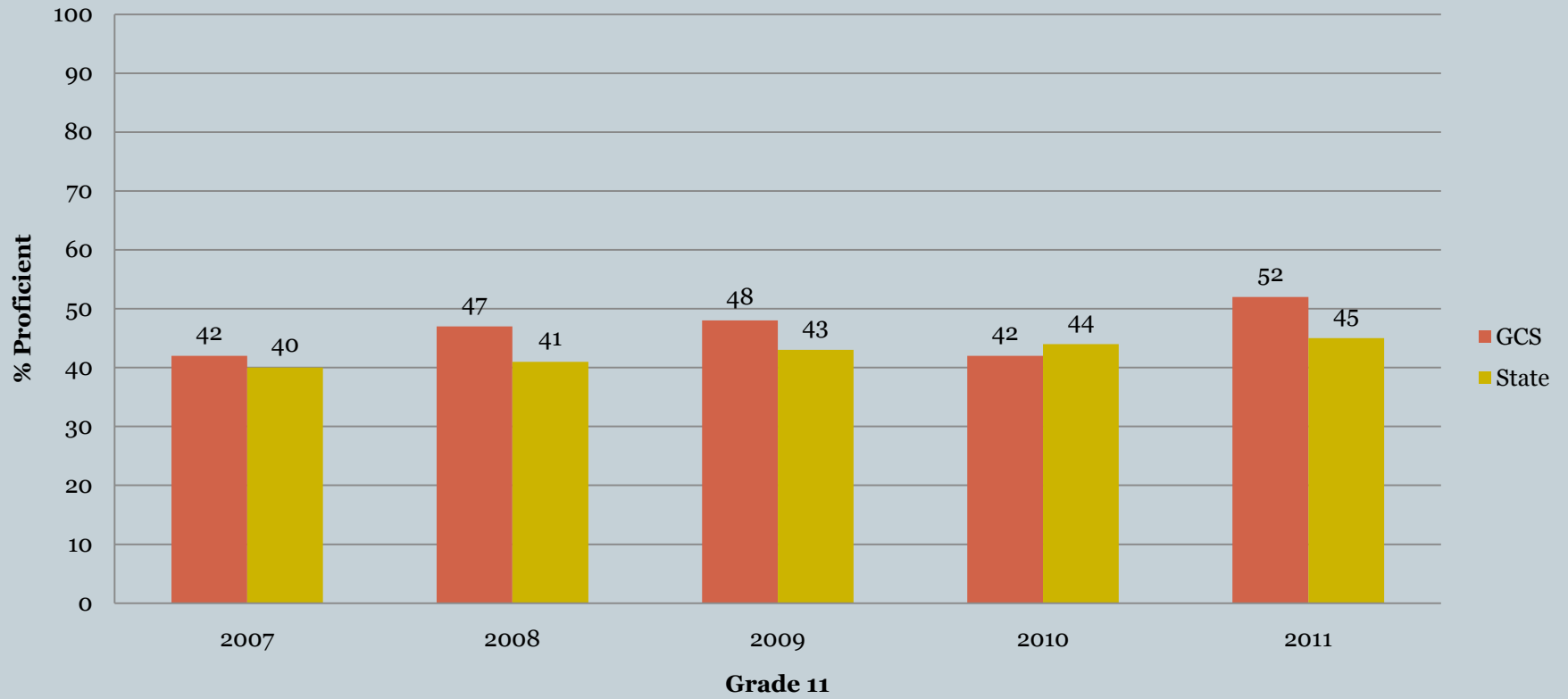


2007-11 MME Reading GCS vs. State



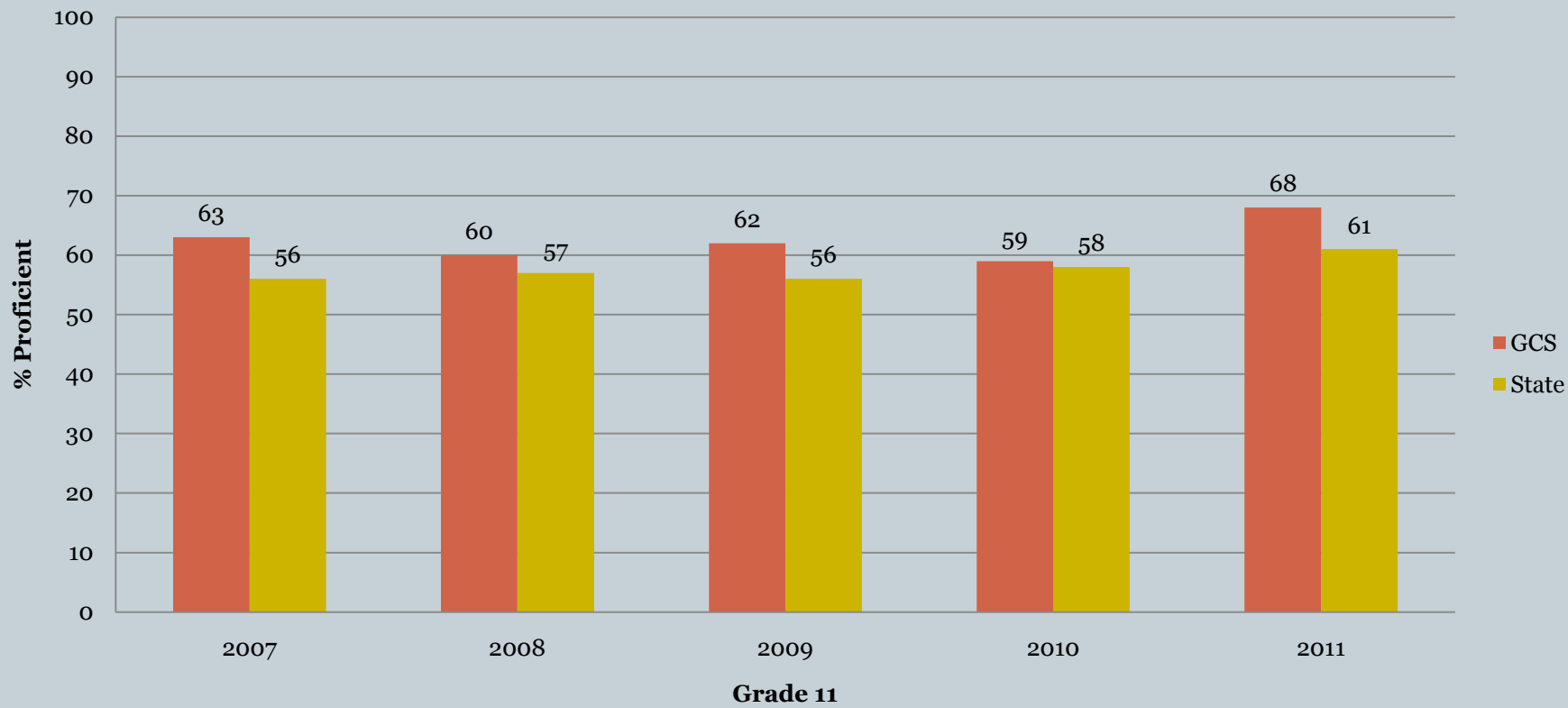


2007-11 MME Writing GCS vs. State



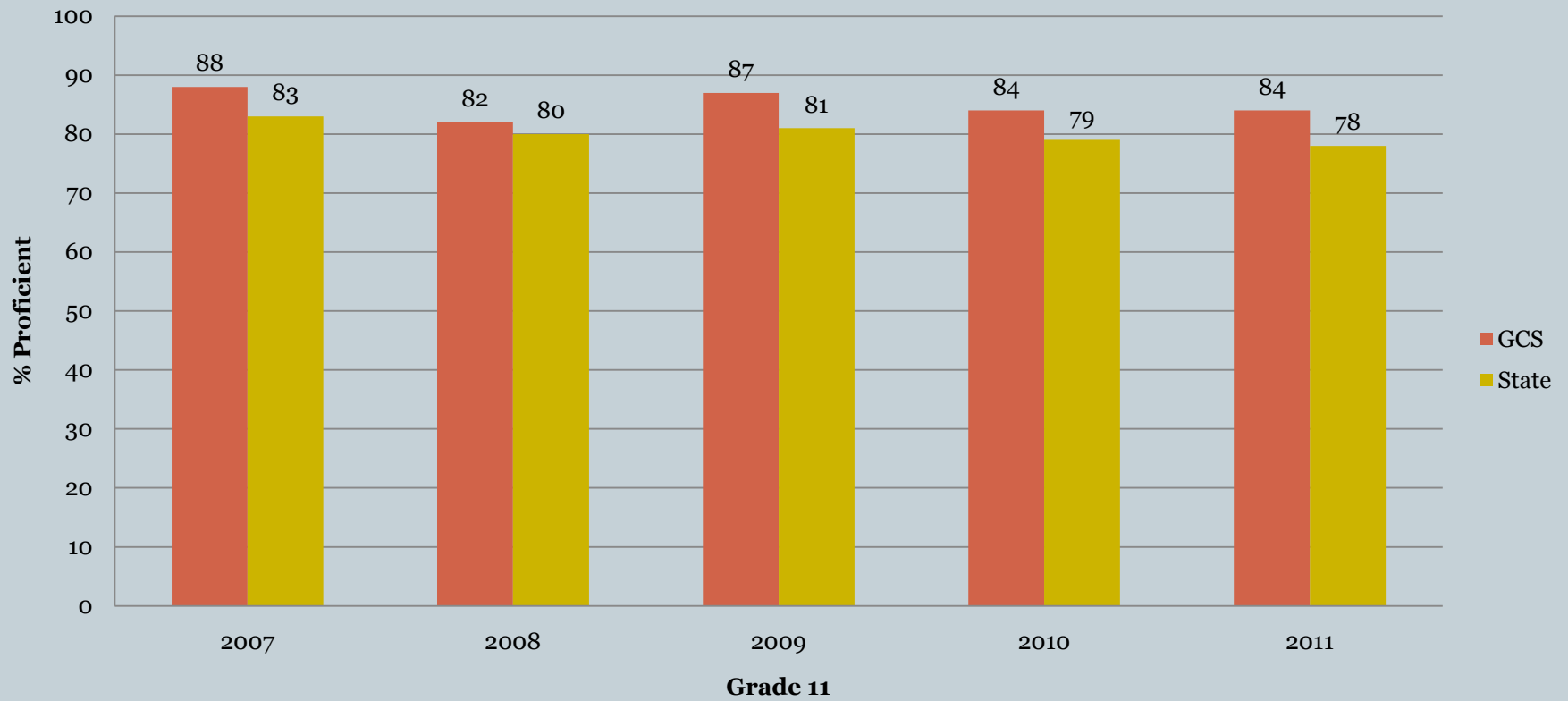


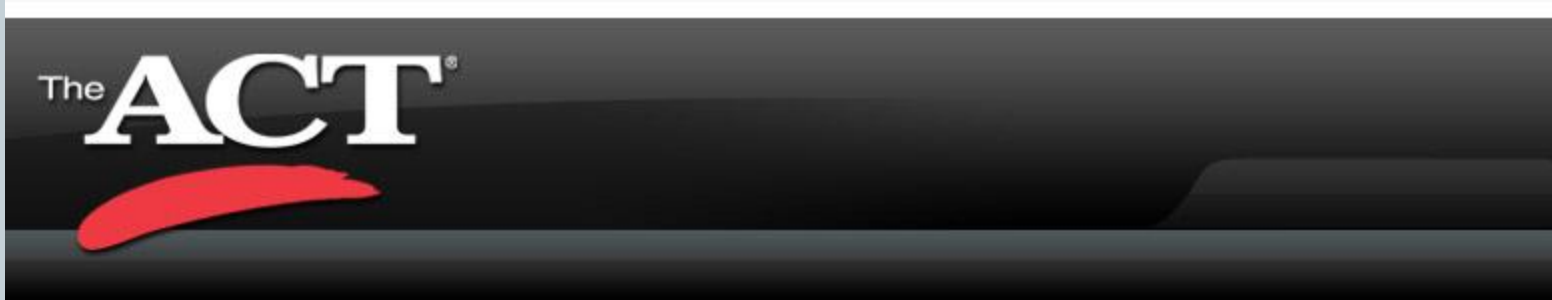
2007-11 MME Science GCS vs. State





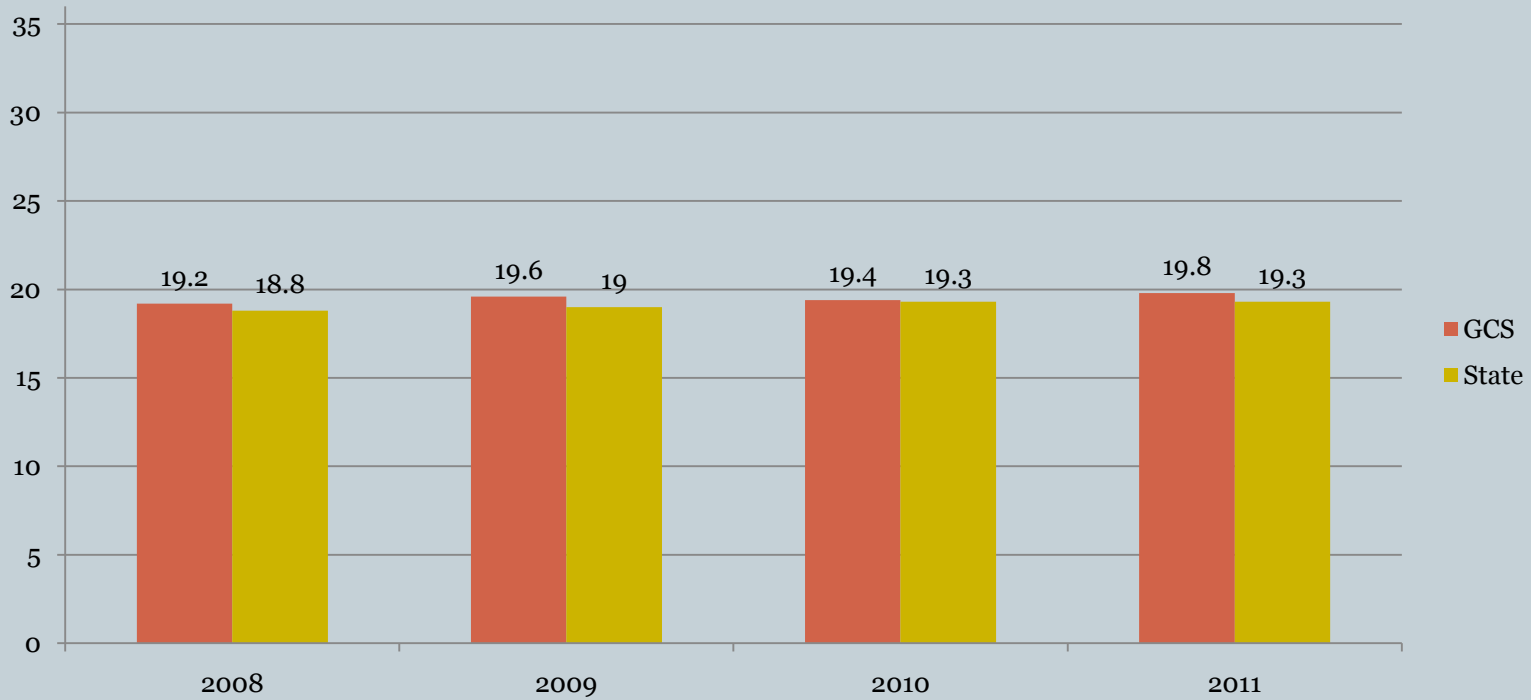
2007-11 MME Social Studies GCS vs. State





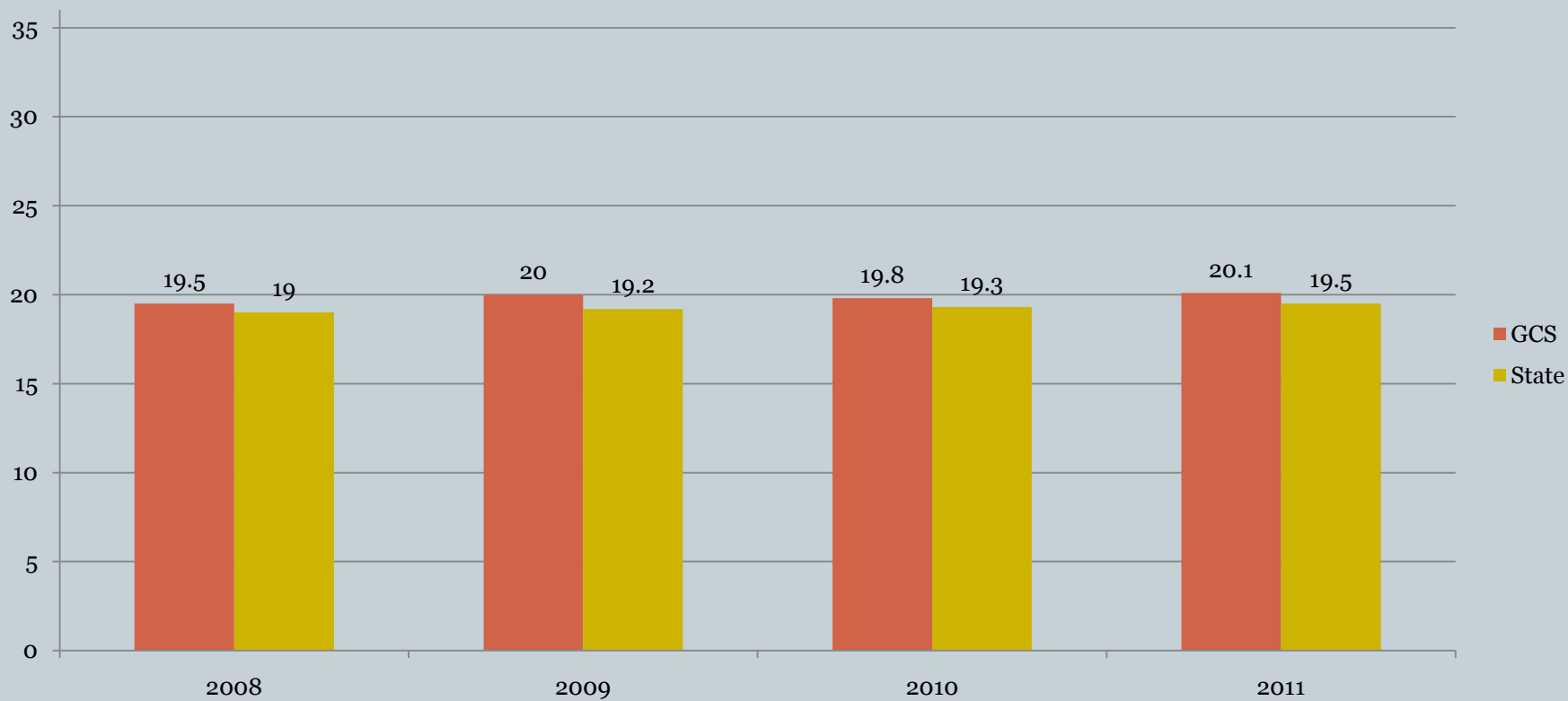


2008-11 ACT Composite GCS vs. State



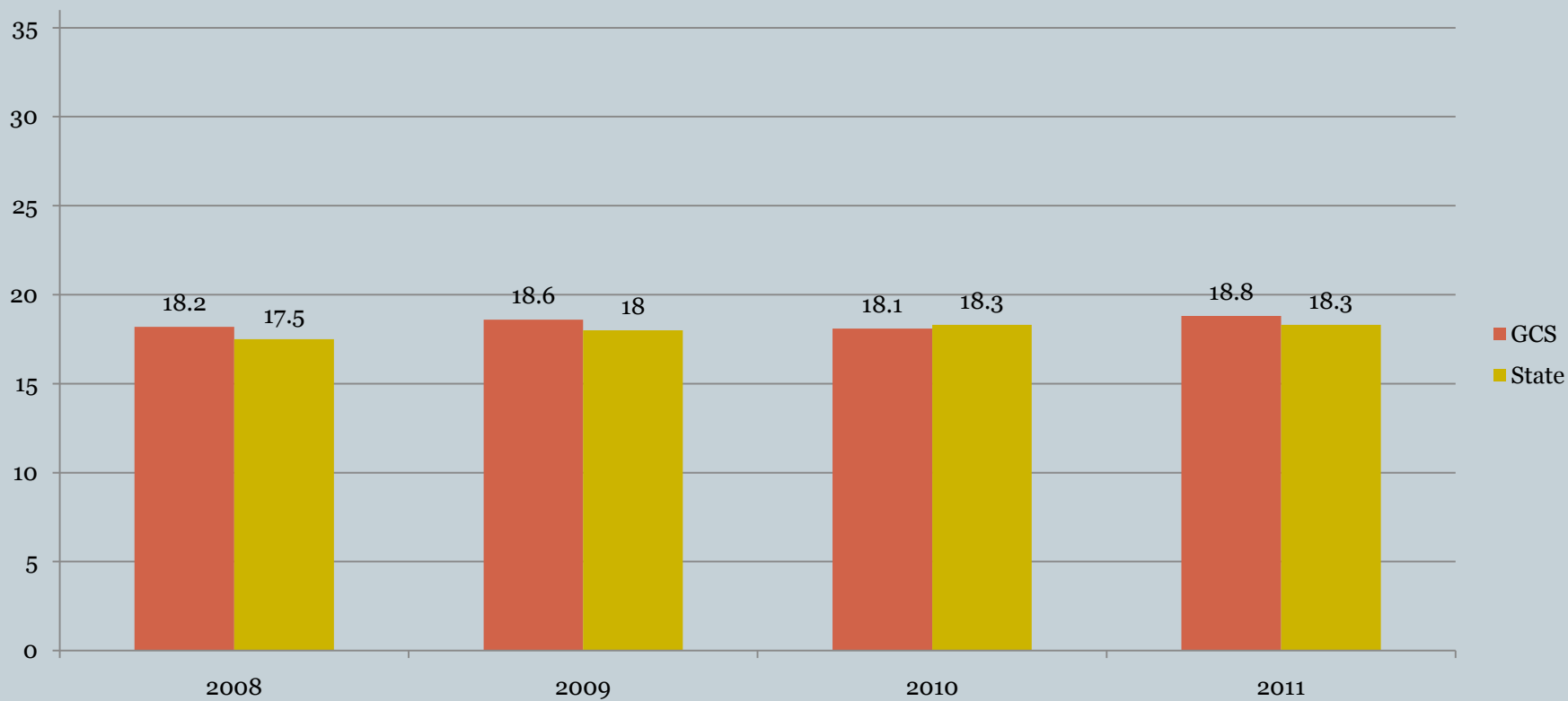


2008-11 ACT Math GCS vs. State



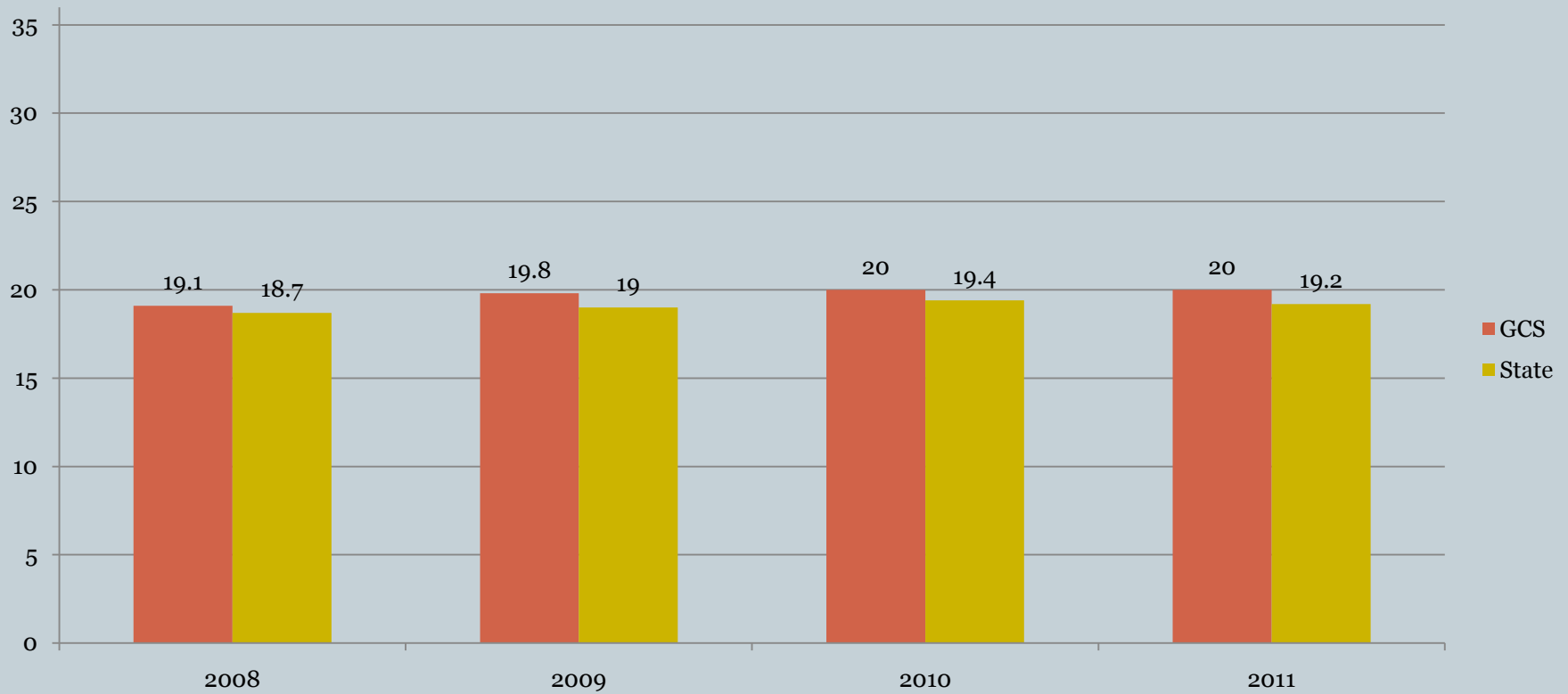


2008-11 ACT English GCS vs. State





2008-11 ACT Reading GCS vs. State



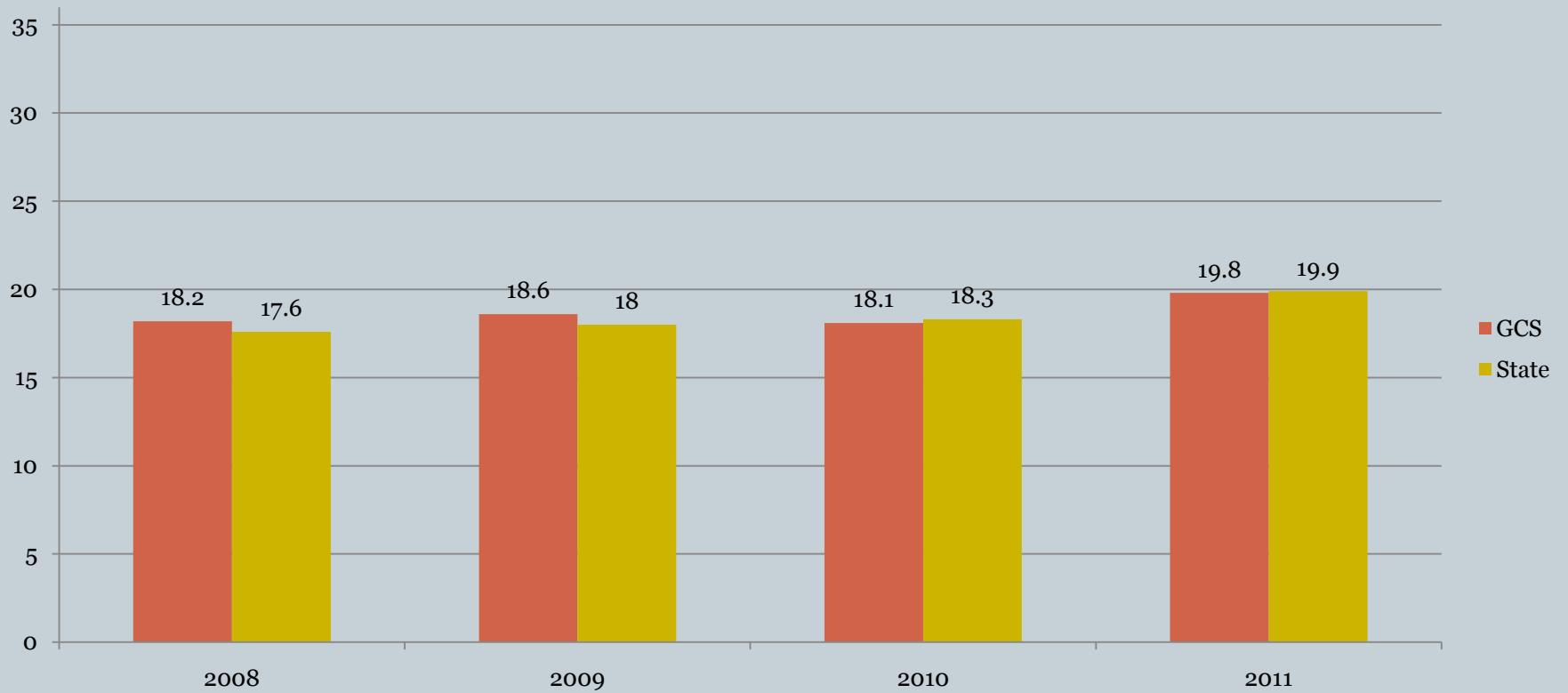


2008-11 ACT Writing GCS vs. State





2008-11 ACT Science GCS vs. State



SUBGROUP



NCLB Subgroups

- Economically disadvantaged students
- Students from major racial and ethnic groups
- Students with disabilities under the IDEA
- Students with limited English proficiency



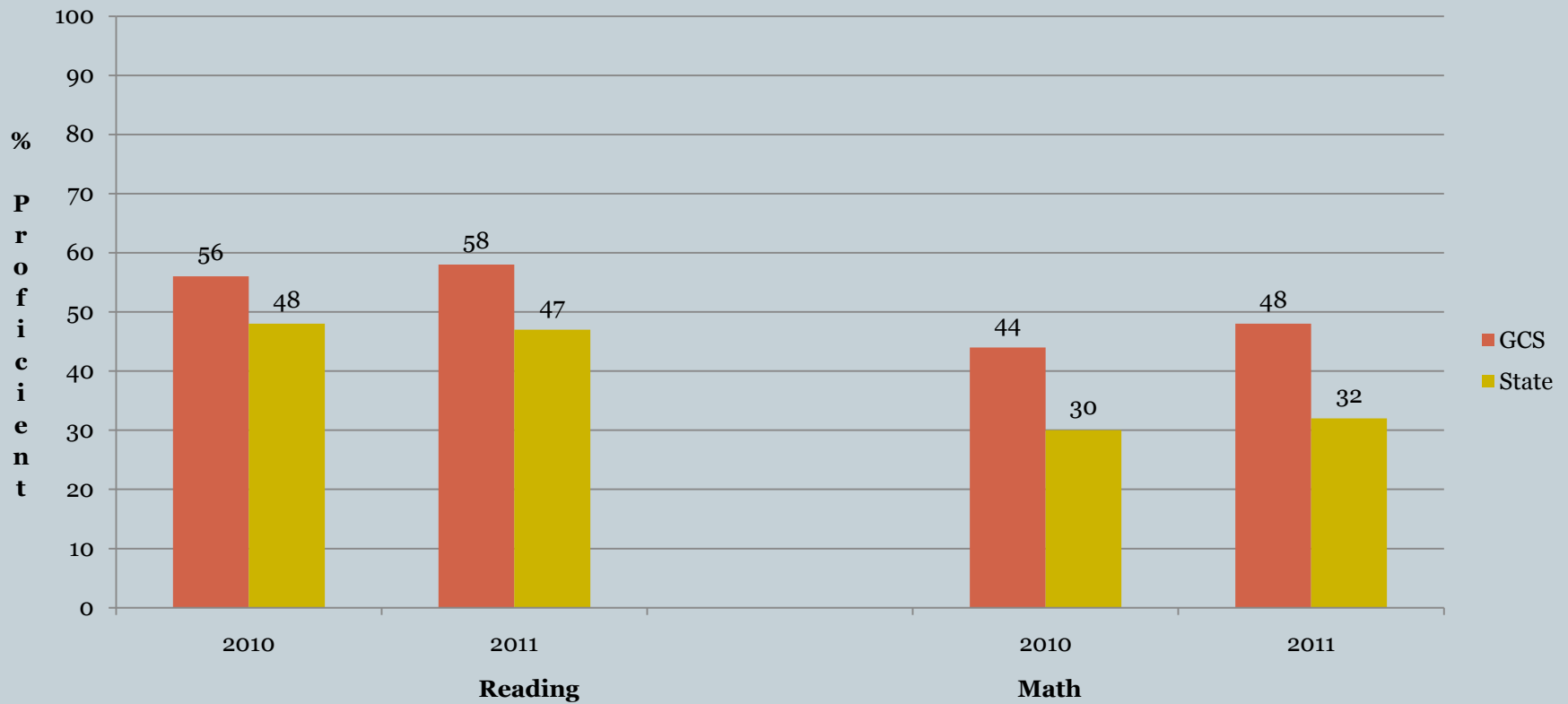
SUBGROUP



- Identifying subgroup performance is one of the most significant accountability components of The No Child Left Behind Act of 2001 (NCLB). On the MEAP, a group of students constitutes a subgroup when the number is 30 or greater in the grade level.

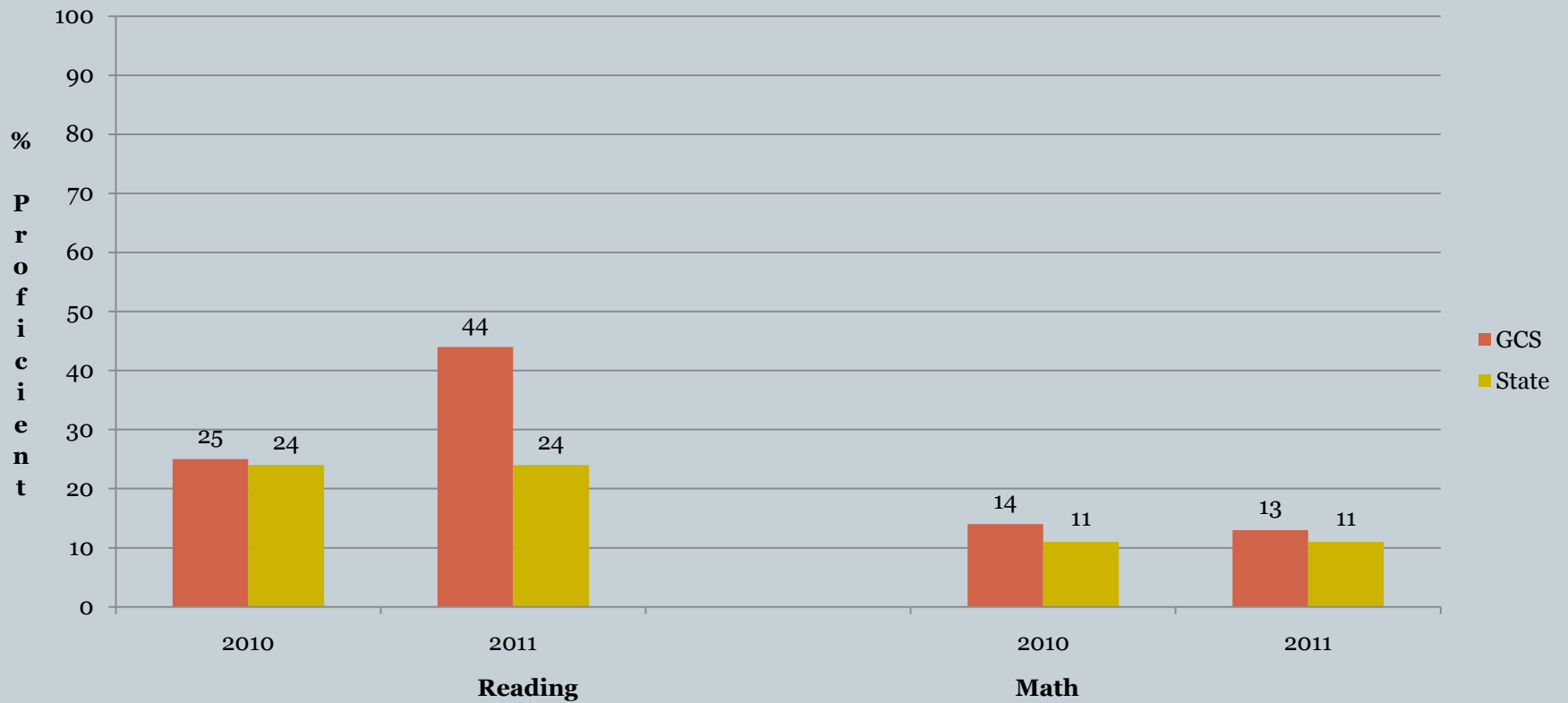


2010-11 MME Economically Disadvantaged GCS vs. State





2010-11 MME Students With Disabilities GCS vs. State



Summary Statements



- GCS percent proficient on the MME increased an average of **6 points** compared to the state's **.6 point** average increase.
- GCS MME percent proficient level in 2011 is higher than the state in all tested areas.
- GCS scores improved on all MME areas except Social Studies (where it stayed the same). Most significant increases were in Math (**10 points**) and Writing (**10 points**).

Summary Statements



- GCS ACT composite scores are the highest they have been in four years (since all 11th grade students were required to take the test).
- GCS is higher than the state average in all ACT areas except Science (-.1). Most notably in Math (+.6), Reading (+.8), and Writing(+.6).
- GCS subgroups demonstrated significant gains in 2011 in Reading and Math, scoring an average of 12 points higher than the state average for comparable subgroups.